



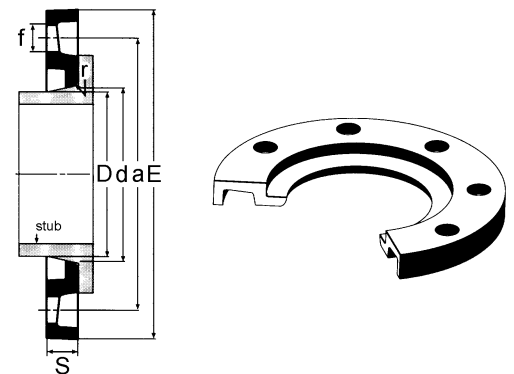
D	DN	d	a	E	S	f	n°	r	Peso Weight (kg)
50	40	62	110	150	16	18	4	3	1.000
63	50	78	125	165	16	18	4	3	1.100
75	65	92	145	185	16	18	4	3	1.400
90	80	108	160	200	19	18	8	3	1.600
110	100	128	180	220	19	18	8	3	1.800
125	100	135	180	220	19	18	8	3	1.700
140	125	158	210	250	19	18	8	3	2.100
160	150	178	240	285	19	22	8	3	2.600
180	150	188	240	285	19	22	8	3	2.500
200	200	235	295	340	18	22	8	3	3.500
225	200	238	295	340	18	22	8	3	3.500
250	250	288	350	395	22	22	12	3	5.300
280	250	294	350	395	22	22	12	3	5.100
315	300	338	400	445	26	22	12	3	6.600
355	350	376	460	505	30	22	16	4	11.300
400	400	430	515	565	34	26	16	4	14.200
450	500	517	620	670	42	26	20	6	21.500
500	500	533	620	670	38	26	20	4	18.700
560	600	618	725	785	50	30	20	7	34.800
630	600	645	725	785	40	30	20	4	26.400
710	700	740	840	900	45	30	24	5	36.400
800	800	843	950	1015	53	33	24	5	50.500
900	900	947	1050	1115	56	33	28	5	55.800
1000	1000	1050	1160	1230	62	36	28	5	71.100
1200	1200	1260	1380	1455	68	39	32	6	101.000
1400	1400	1441	1590	1675	72	42	36	6	143.000
1600	1600	1644	1820	1915	84	48	40	6	203.000

FLANGE LIBERE in Fe con rivestimento in resina epossidica per COLLARI PP e PE T/T - Cod. FLFZE

- Profilate in ghisa sferoidale
- Rivestimento epossidico - colore nero
- Per collari in PP cod. CART
- Foratura PN10 secondo ISO DIN 2501
- A richiesta, solo zincate a caldo

BACKING RINGS in Fe with Epoxy resin coating for PP & PE BW STUBS - Code FLFZE

- Profiled in ductil iron
- With epoxy coating - black colour
- For PP stubs code CART
- Drilled PN10 according to ISO DIN 2501
- On request, hot dipped galvanized only



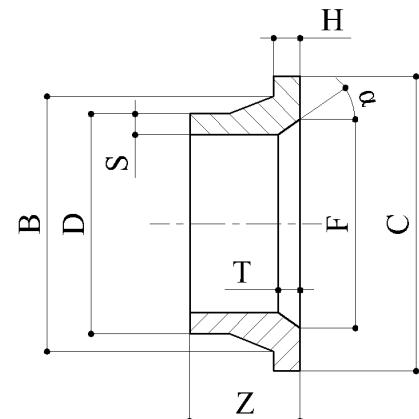
D	C	B	Z	F	H	T	S	α	Peso/Weight (kg)
PN 10									
90 ¹	133	105	80	80	18	6	8.5	30	.350
110	160	125	80	100	20	9	10.5	30	.450
180	212	181	80	164	30	16	17	30	.925
225	268	235	100	209	32	24	22	30	1.800
280	320	291	100	265	35	32	26	30	2.400
315	370	335	110	308	44	47	31	30	3.500
355	430	373	135	355	55	70	33	25	6.000
400	482	427	140	389	61	70	38	25	8.000

COLLARI SPECIALI (con SMUSSO) - Cod. CART(D)IDE

- Estremità per saldatura di testa
- Dimensioni secondo serie metrica ISO 161-1

SPECIAL STUB FLANGES (CHAMFERED) - Code CART(D)IDE

- Fitting for butt welding
- Dimensions to suit metric series ISO 161-1



¹ D. 90 per flange con foratura ANSI B16,5 class 150.
D. 90 for flanges drilled according to ANSI B16,5 class 150.