



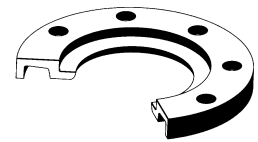
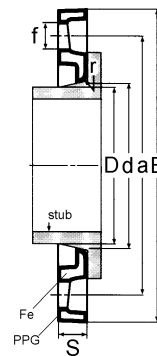
D	DN	d	a	E	S	f	n°	r	Peso Weight (kg)
20	15	28	65	106	18	14	4	3	.350
25	20	34	75	118	18	14	4	3	.400
32	25	42	85	122	17	14	4	3	.400
40	32	51	100	142	17	18	4	3	.500
50	40	62	110	156	19	18	4	3	.700
63	50	78	125	171	20	18	4	3	.900
75	65	92	145	191	21	18	4	3	1.090
90	80	110	160	206	21	18	8	3	1.140
110	100	128	180	226	22	18	8	3	1.500
125	100	135	180	226	23	18	8	3	1.400
140	125	159	210	261	25	18	8	3	1.700
160	150	178	240	296	28	22	8	3	2.420
180	150	188	240	296	27	22	8	3	2.070
200	200	235	295	350	32	22	8	3	3.100
225	200	238	295	350	31	22	8	4	3.160
250	250	288	350	412	36	22	12	4	5.000
280	250	294	350	412	35	22	12	4	4.400
315	300	338	400	462	42	22	12	4	6.760
355	350	376	460	525	52	22	16	6	11.100
400	400	430	515	586	56	26	16	6	14.700
450	500	514	620	690	55	27	20	6	20.300
500	500	530	620	690	55	27	20	6	19.200
560	600	615	725	804	62	30	20	6	30.000
630	600	642	725	804	62	30	20	6	27.700
710	700	740	840	912	49	30	24	5	28.600
800	800	843	950	1026	58	33	24	5	39.300
900	900	947	1050	1129	62	33	28	5	48.500
1000	1000	1050	1160	1245	70	36	28	5	60.000

### FLANGE LIBERE PPG/Fe per COLLARI PP e PE T/T - Cod. FLPPGFE

- Profilate, con rivestimento in PP caricato vetro (30%) e inserto in ghisa sferoidale – colore nero
- Per collari in PP cod. CART e PPFCART (1)
- Foratura PN10 secondo ISO DIN 2501

### BACKING RINGS PPG/Fe for PP & PE BUTT WELDING STUBS - Code FLPPGFE

- Profiled, in PP fiber-glass (30%) reinforced and ductil iron insert – black colour
- For PP stubs code CART and PPFCART (1)
- Drilled PN10 according to ISO DIN 2501



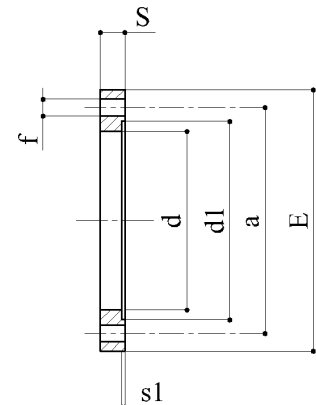
D	DN	d	a	E	d1	s1	S	f	n°	Peso Weight (kg)
63	50	79	125	165	103	2	20	18	4	.410
75	65	94	145	189	124	3	23	18	4	.600
90	80	108	160	200	142	3	26	18	8	.720
110	100	128	180	224	161	3	27	18	8	.850
125	125	134	210	255	163	3	30	18	8	1.200
140	125	158	210	255	191	3	30	18	8	1.150
160	150	177	240	287	217	3	30	22	8	1.520
180	175	184	270	318	-	-	32	22	8	1.750
200	200	233	295	345	269	3	31	22	8	1.940
225	200	239	295	345	269	3	31	22	8	1.900
250	250	288	350	399	328	3	32	22	12	2.280
280	250	294	350	399	328	3	32	22	12	2.150
315	300	336	400	450	373	3	34	22	12	3.060

### FLANGE LIBERE PVC - Cod. CVFCT

- Per collari in PP T/T cod. CART
- Foratura PN10 secondo ISO DIN 2501

### BACKING RINGS PVC - Code CVFCT

- For PP stubs BW code CART
- Drilled PN10 according to ISO DIN 2501



1 Nel caso di collari PPFCART110 usare flange cod. FLPPGFEV.  
In case of stubs PPFCART110 use backing ring code FLPPGFEV.