



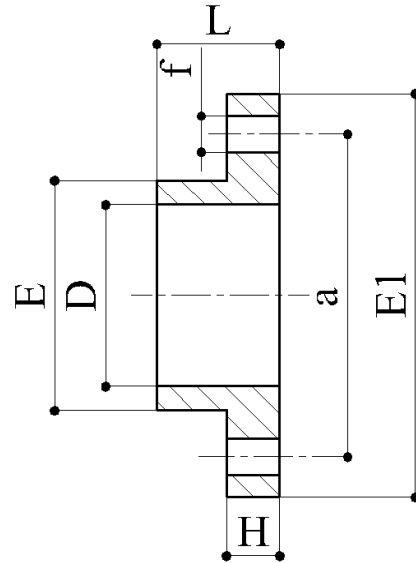
D	DN	a	E	E1 (mm)	L	H	f	n°	Peso Weight (kg)
20	15	65	28	94	20	14	14	4	.100
25	20	75	32	104	20	15	14	4	.130
32	25	85	39	114	24	15	14	4	.160
40	32	100	53	138	31	19	18	4	.250
50	40	110	59	148	31	18	18	4	.290
63	50	125	76	163	37	18	18	4	.350
75	65	145	95	187	46	23	18	4	.560
90	80	160	112	203	48	23	18	8	.650
110	100	180	134	221	56	24	18	8	.850

FLANGE a COLLARE - Cod. PPFFLUC

- Estremità per polifusione nel bicchiere
- Dimensioni secondo serie metrica ISO 161-1
- Foratura PN10 secondo norma ISO DIN 2501

SLIP ON FLANGES - Code PPFFLUC

- Jointing by socket fusion welding in the socket
- Dimensions to suit metric series ISO 161-1
- Drilled PN10 according to ISO DIN 2501



D	DN	a	E	S	f	n°	Peso Weight (kg)
32	25	85	114	20	14	4	.160
40	32	100	138	20	18	4	.290
50	40	110	148	19	18	4	.300
63	50	125	163	19	18	4	.350
75	65	145	187	22	18	4	.530
90	80	160	203	24	18	8	.670
110	100	180	221	24	18	8	.850
125/140	125	210	255	28	18	8	1.250
160	150	240	285	30	22	8	1.550

FLANGE CIECHE - Cod. PPFCUD

- Per collari PP - PPFCART e CART(D)P(PN)
- Foratura PN10 secondo ISO DIN 2501

BLANK FLANGES - Code PPFCUD

- For PP stubs - PPFCART e CART(D)P(PN)
- Drilled PN10 according to ISO DIN 2501

