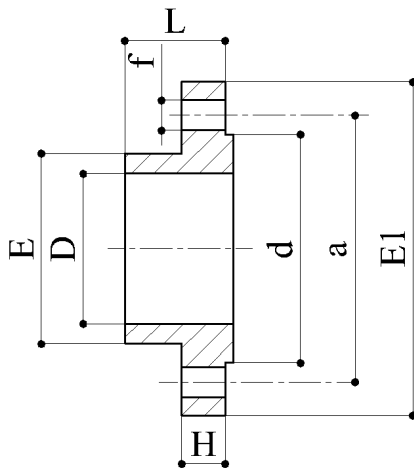
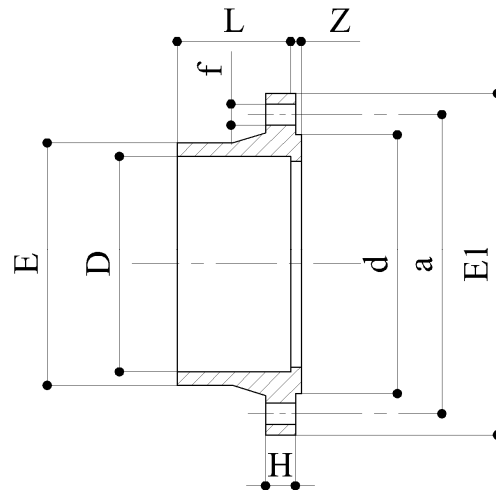


D	DN	a	E	E1	d	L	Z	H	f	n°	Peso Weight (kg)	PN <sup>2</sup> (bar)	Mod.	FLANGE a COLLARE UNI Cod. CVFLUC
20	15	65	28	95	49	21	-	14	14	4	.150	10	a	- Giunzione a bicchiere per incollaggio
25	20	75	32	105	49	21	-	15	14	4	.190	10	a	- Dimensioni secondo serie metrica ISO 161-1
32	25	85	39	115	58	29	-	17	14	4	.240	10	a	- Foratura PN10 secondo ISO DIN 2501
40	32	100	54	140	79	32	-	19	18	4	.380	10	a	
50	40	110	60	150	90	36	-	20	18	4	.440	10	a	<b>SLIP ON FLANGES DIN</b>
63	50	125	77	165	105	42	-	20	18	4	.560	10	a	Code CVFLUC
75	65	145	96	189	123	47	-	23	18	4	.850	10	a	- Sockets for solvent welding
90	80	160	114	205	137	52	-	25	18	8	1.000	10	a	- Dimensions to suit metric series ISO 161-1
110	100	180	136	223	154	65	-	27	18	8	1.300	10	a	- Drilled PN10 according to ISO DIN 2501
160	150	240	187	287	214	86	5	30	22	8	2.300	10	b	
160 <sup>1</sup>	150	240	187	287	-	86	3	29	22	8	2.200	10	b	
225	200	295	253	344	270	118	7	33	22	8	3.450	10	b	
225 <sup>1</sup>	200	295	253	344	-	118	5	31	22	8	3.400	10	b	

Mod. a



Mod. b



D (mm)	DN (inch)	a	E	E1	d (mm)	L	Z	H	f	n°	Peso Weight (kg)	PN <sup>2</sup> (bar)	Mod.	FLANGE a COLLARE ANSI Cod. CVFLAC
25	20 ¾"	70	47	100	-	20	-	18	16	4	.180	10	a	- Giunzione a bicchiere per incollaggio
32	25 1"	79.5	39	115	68	29	-	17	16	4	.240	10	a	- Dimensioni secondo serie metrica ISO
40	32 1¼"	89	58	119	-	32	-	19	16	4	.280	10	a	- Foratura ANSI B16,5 Class 150
50	40 1½"	98.5	60	129	90	36	-	24	16	4	.400	10	a	
63	50 2"	120	77	165	105	42	-	20	19	4	.440	10	a	<b>SLIP ON FLANGES ANSI</b>
75	65 2½"	140	96	189	123	47	-	23	19	4	.860	10	a	Code CVFLAC
90	80 3"	152	114	193	137	52	-	27	19	4	.950	10	a	- Sockets for solvent welding
110	100 4"	190	136	233	154	64	-	27	19	8	1.400	10	a	- Dimensions to suit metric series ISO 161-1
160	150 6"	240	187	287	214	86	5	30	22	8	2.300	10	b	- Drilled ANSI B16,5 Class 150

1 | Versione a faccia piana.  
Flat Face type.

2 | Pressione nominale a 20° C (bar) - Adduzione acqua.  
Nominal pressure at 20° C (bar) - Water supply.