



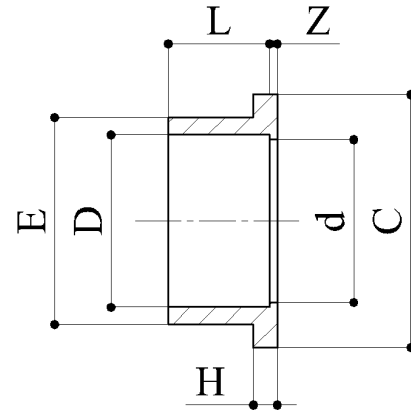
D	E	C	d	L	Z	H	Peso Weight	PN ²
			(mm)				(kg)	(bar)
20	27	34	16	16	3	6	.010	10
25	33	41	22	19	3	7	.016	10
32	41	50	27	22	3	7	.025	10
40	50	61	32	26	3	8	.040	10
50	61	73	45	31	3	8	.060	10
63	77	100	58	38	3	11	.137	10
75	93	120	70	43	4	11.5	.225	10
90	108	132	85	52	5	12.5	.305	10
110	131	152	105	62	5.5	13.5	.465	10
125	148	189	117	69	6	14	.725	10
140	165	189	132	76	6	15	.815	10
160	189	215	152	86	6	16	1.200	10
180	201	247	167	94	8	15	1.215	10
200	230	265	192	106	8	24	2.150	10
225	251	269	212	118	8	24	2.050	10
250	282	327	244	131	8.5	27	3.425	10
280	306	327	273	146	8.5	27	2.900	10
315	342	378	305	164	8.5	30	4.100	8
355	386	431	337	184	8	30	6.050	5
400	434	483	384	206	12	30	8.100	5
450	487	539	433	155 ¹	8	30	8.100	4
500	532	574	482	153 ¹	8	31	7.400	4

COLLARI (rigati) - cod. CVCART

- Per guarnizioni piane EPDM - GUAREPDM
- Estremità a bicchiere per incollaggio
- Dimensioni secondo serie metrica ISO 161-1

STUB FLANGES (serrated) - code CVCART

- For Flat Gaskets EPDM - GUAREPDM
- Socket for solvent welding
- Dimensions to suit metric series ISO 161-1



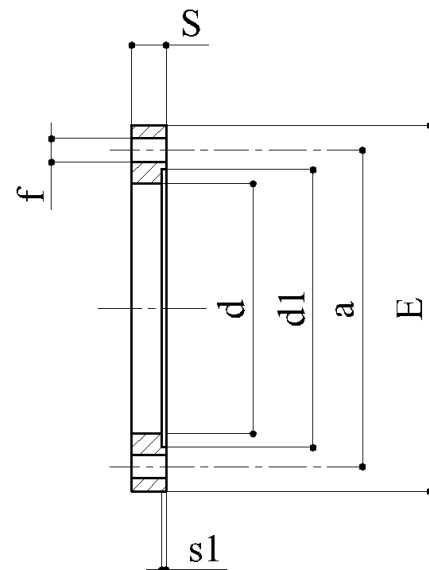
D	DN	d	a	E	d1	s1	S	f	n°	Peso Weight
										(kg)
20	15	29	65	95	42	2	14	14	4	.110
25	20	34	75	105	52	2	15	14	4	.142
32	25	44	85	115	56	2	17	14	4	.190
40	32	53	100	140	75	2	19	18	4	.305
50	40	64	110	150	83	2	20	18	4	.355
63	50	79	125	165	102	2	20	18	4	.410
75	65	94	145	189	121	3	23	18	4	.600
90	80	113	160	200	134	3	26	18	8	.715
110	100	134	180	224	154	3	27	18	8	.830
125	125	151	210	255	191	3	30	18	8	1.300
140	125	167	210	255	191	3	30	18	8	1.100
160	150	190	240	287	217	3	30	22	8	1.390
180	175	203	270	318	246	3	32	22	8	1.800
200	200	233	295	341	269	3	31	22	8	1.940
225	200	253	295	341	270	3	31	22	8	1.630
250	250	285	350	399	328	3	32	22	12	2.350
280	250	307	350	399	328	3	32	22	12	1.970
315	300	345	400	450	378	3	34	22	12	2.525
355	350	388	460	511	434	3	34	22	16	3.550
400	400	438	515	572	485	3	34	25	16	4.500
450	450	488	565	614	540	3	32	25	20	4.100
500 ³	500	533	600	657	575	3	30	22	20	4.200
500 ⁴	500	534	620	680	575	3	35	25	20	6.100

FLANGE LIBERE PVC- cod. CVFUPC

- Per collari in PVC - CVCART
- Per collari in PP a bicchiere fino D. 110
- Foratura PN10 secondo ISO DIN 2501

BACKING RINGS PVC- code CVFUPC

- For PVC stubs - CVCART
- For PP stubs socket fusion up to D. 110
- Drilled PN10 according to ISO DIN 2501



1 | Bicchiere a lunghezza ridotta.
Socket with reduced length.

2 | Pressione nominale a 20° C (bar) - Adduzione acqua.
Nominal pressure at 20° C (bar) - Water supply.

3 | Foratura PN6.
Drilled PN6.

4 | Foratura PN10.
Drilled PN10.